

# Smart Asset Monitoring

« Transform your data into intelligent information »



in partnership with



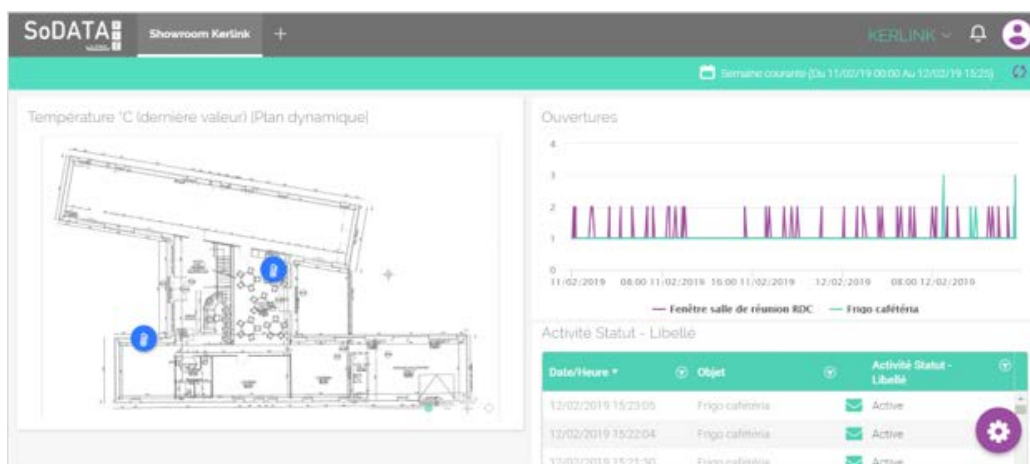
## Challenges

- How to monitor cold-chain respect for sensitive goods?
- How to follow the temperature and doors/windows opening?
- How to control the right use of rental assets?
- How to ensure quality of services, improve the use experience and secure your revenue?



## Kerlink & Synox solution

- Real time temperature and opening data
- Temperatures follow-up with variation history
- Alerts in case a threshold is reached or if a door or window is opened



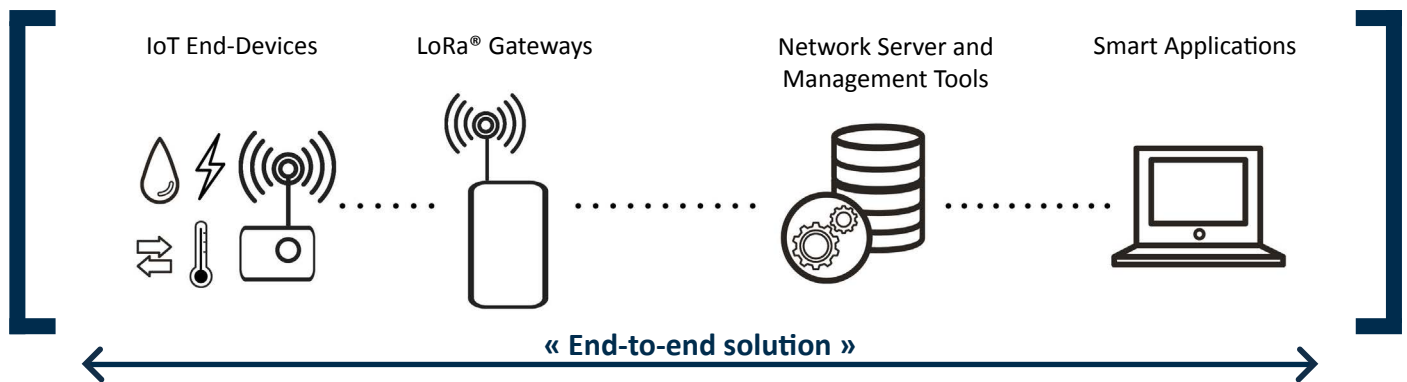
All product specifications are subject to change without notice

# Smart Asset Monitoring

« Transform your data into intelligent information »

## Architecture & Benefits

- **Open standard solution with the « Best of » the value chain:** Sensors, Connectivity, Applications
- **Robust & Proven Solution:** demonstrated scalability to address multiple use cases with a multivendor ecosystem
- **IoT solution based on LPWA/LoRaWAN technology** for simple installation and long battery life



## Ask for your turnkey Discovery Kit!

- 1 Ineosense sensor for temperature
- 1 Ineosense sensor for temperature, hygrometry & door opening detection
- 1 Kerlink Wirnet™ iFemtocell Gateway
- 3 months access to Kerlink Wanesy™ Management Center (WMC) for LoRa Network Management
- 3 months access to Synox applications (SoM2M/SoDataViz) for Business Data Management
- Services: prestaging (declaration of GW and devices in WMC), training, support and debriefing



[sales@kerlink.fr](mailto:sales@kerlink.fr)  
+ 33 2 99 12 29 00  
1 rue Jacqueline Auriol  
35235 Thorigné-Fouillard  
France

[contact@synox.io](mailto:contact@synox.io)  
+33 9 70 26 40 12  
Parc Eureka, Le Tucano,  
836 Rue du Mas de Verchant  
34000 Montpellier  
France

**kerlink**  
communication is everything

**SYNOX**  
Innovate together

*All product specifications are subject to change without notice*